



# ACCESS MANAGEMENT HYBRID PUBLIC MEETING

Virtual Meeting: September 25, 2023

In-Person Meeting: September 26, 2023

## SR 21 (Blanding Boulevard)

From South of Wells Road to the Ortega River

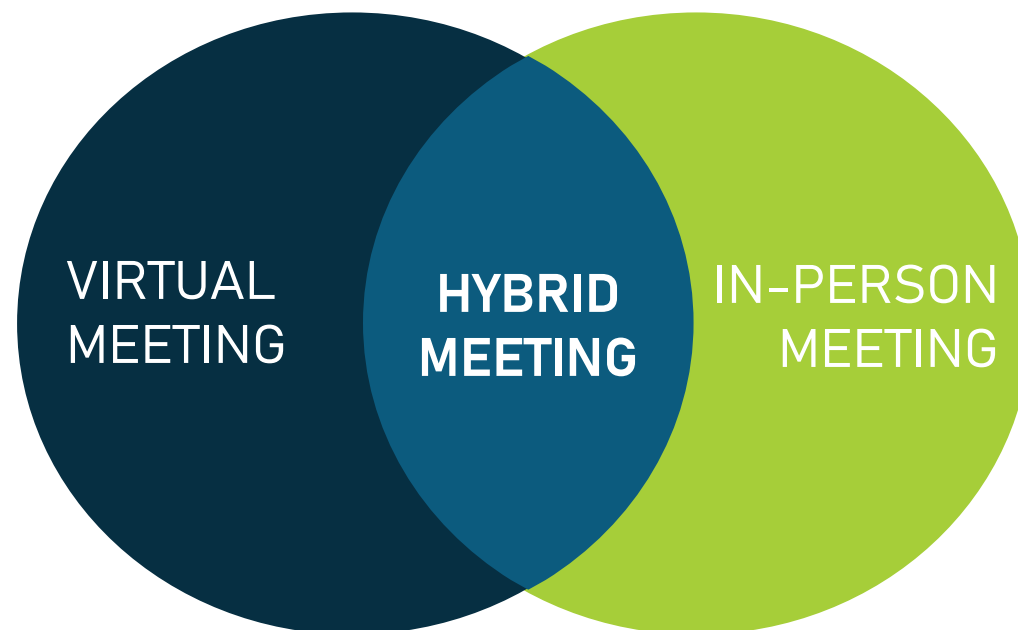
Financial Management Number (FM No.): 446808-1



# Hybrid Public Meeting

SR 21 (Blanding Boulevard) from south of Wells Road to the Ortega River, Clay and Duval Counties, Florida | Financial Management No: 446808-1

This Public Meeting is being conducted in a hybrid format



# GoTo Webinar Control Panel

SR 21 (Blanding Boulevard) from south of Wells Road to the Ortega River, Clay and Duval Counties, Florida | Financial Management No: 446808-1

The image illustrates the GoTo Webinar control panel interface. The main window shows the FDOT website with the project title "SR 21 (Blanding Boulevard) Access Management Improvements from south of Wells Road to the Ortega River". The meeting details indicate an in-person meeting on Tuesday, September 26, 2023, at 2054 Plainfield Ave, Orange Park, Florida 32073, from 4:30 pm to 6:30 pm. The GoTo Webinar control panel is overlaid on the website, showing the audio settings (Computer audio selected), microphone and speaker status, and a questions section with a "Send" button circled in red. A red arrow points from the website to the control panel, and a blue arrow points from the audio settings to the "Computer audio" option.



# Technical Information

SR 21 (Blanding Boulevard) from south of Wells Road to the Ortega River, Clay and Duval Counties, Florida | Financial Management No: 446808-1



All attendees will be placed in 'Listen Only' mode throughout the meeting



Type your comments or questions in the control panel Questions Pane

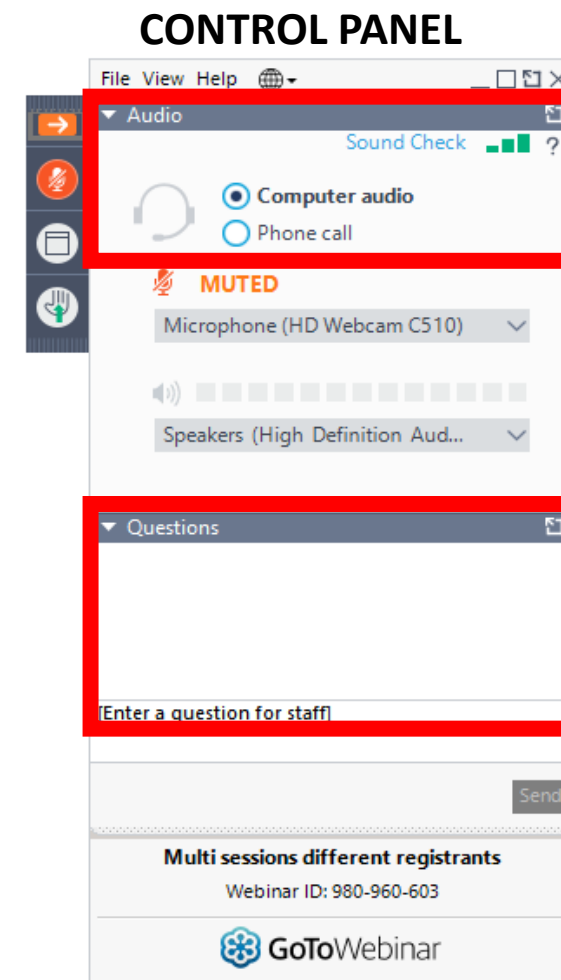


Responses to comments and questions will be provided

# Technical Difficulties

SR 21 (Blanding Boulevard) from south of Wells Road to the Ortega River, Clay and Duval Counties, Florida | Financial Management No: 446808-1

1. If you do not hear the audio during the virtual meeting, please check your computer speaker setting in the control panel
2. If you experience technical difficulties during the meeting, please let us know via the Question box on GoToWebinar Control Panel



Please stay online while we work to resolve the issue.

# Purpose of Public Meeting

SR 21 (Blanding Boulevard) from south of Wells Road to the Ortega River, Clay and Duval Counties, Florida | Financial Management No: 446808-1



Share information



Discuss the proposed improvements



Receive public input



# Public Meeting Components

SR 21 (Blanding Boulevard) from south of Wells Road to the Ortega River, Clay and Duval Counties, Florida | Financial Management No: 446808-1



Open house



Presentation



Public comment period

# Public Notifications

SR 21 (Blanding Boulevard) from south of Wells Road to the Ortega River, Clay and Duval Counties, Florida | Financial Management No: 446808-1



Newspaper



Property  
Owner/Tenant  
Letters



Social Media



Florida  
Administrative  
Register



Emails to  
Project Contact  
List



Project  
Website



# Civil Rights Act of 1964

SR 21 (Blanding Boulevard) from south of Wells Road to the Ortega River, Clay and Duval Counties, Florida | Financial Management No: 446808-1

Public participation is solicited without regard to race, color, national origin, age, sex, religion, disability, or family status.

# Title VI – Nondiscrimination Program

SR 21 (Blanding Boulevard) from south of Wells Road to the Ortega River, Clay and Duval Counties, Florida | Financial Management No: 446808-1

**Persons may file a formal complaint(s) by writing to:**

**Dorothy Neal**

**District 2 Title VI Coordinator**

Florida Department of Transportation  
District 2

1109 S. Marion Avenue, MS 2006

Lake City, Florida 32025-5874

[Dorothy.Neal@dot.state.fl.us](mailto:Dorothy.Neal@dot.state.fl.us)

(386) 961-7616

**Stefan Kulakowski, FCCM, CPM**

**State Title VI Coordinator**

Florida Department of Transportation  
Equal Opportunity Office

605 Suwannee Street, MS 65

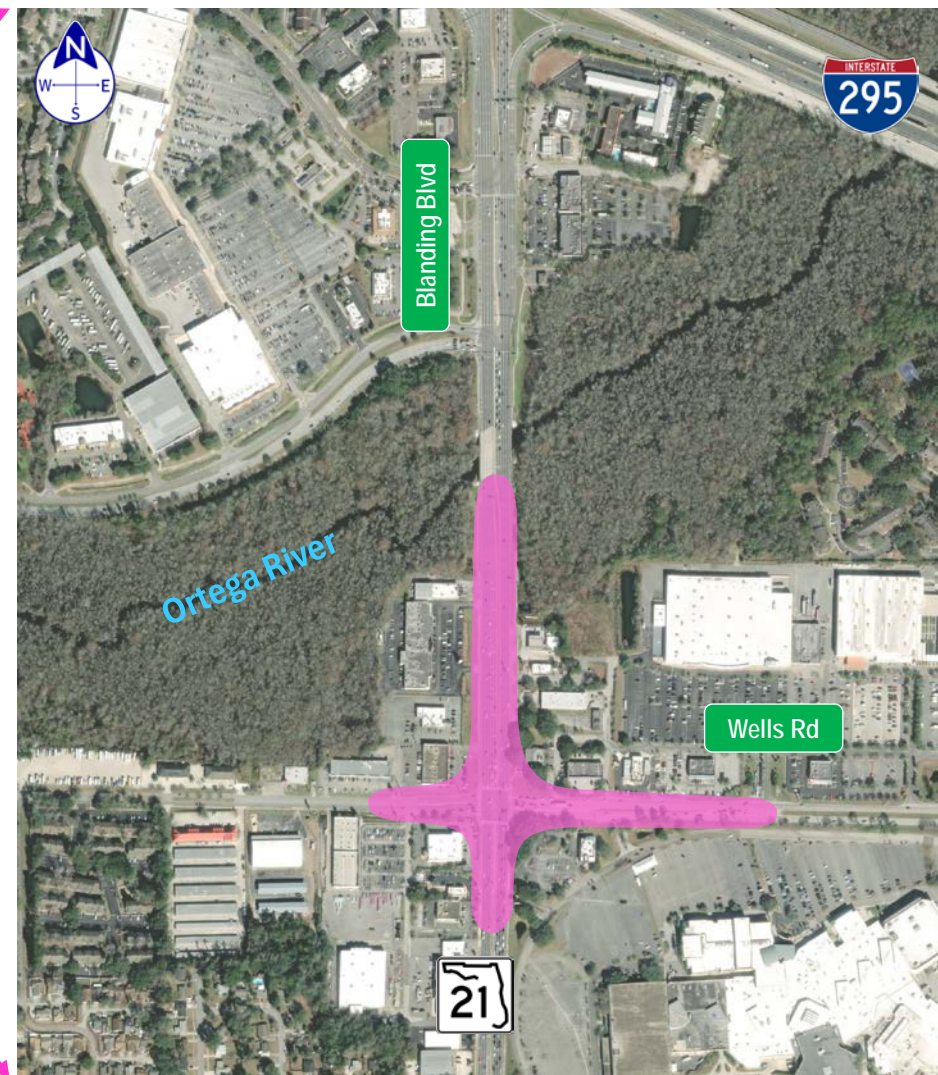
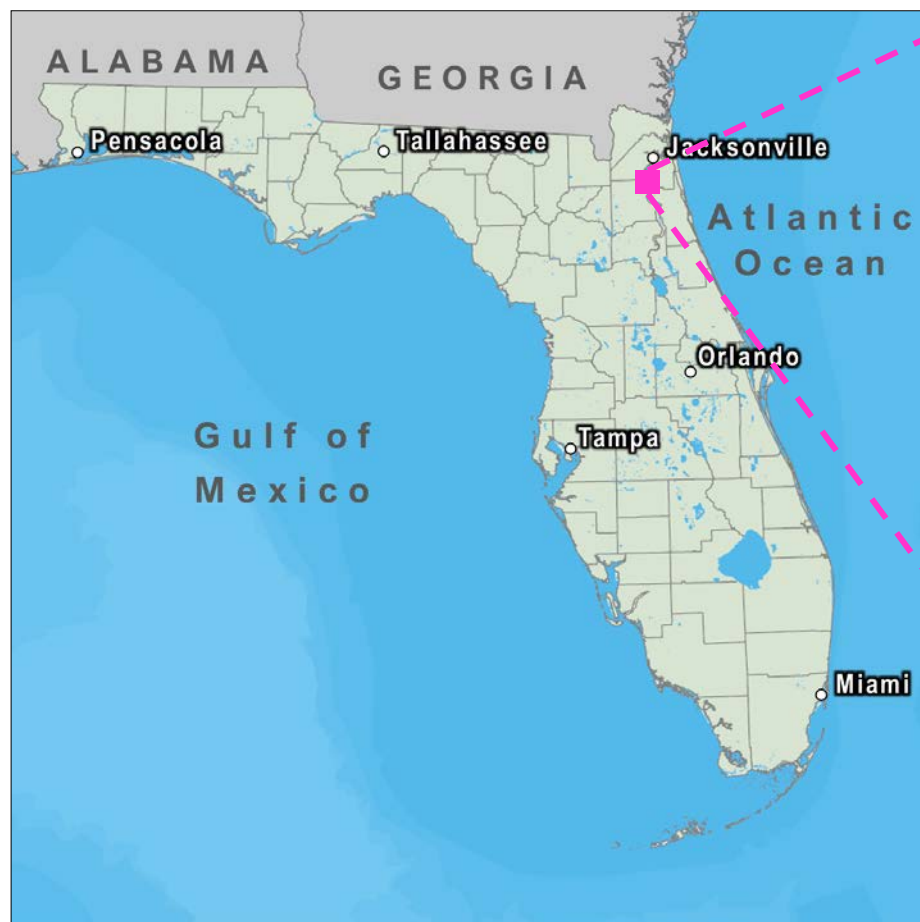
Tallahassee, Florida 32399-0450

[Stefan.Kulakowski@dot.state.fl.us](mailto:Stefan.Kulakowski@dot.state.fl.us)

(850) 414-4742

# Project Location

SR 21 (Blanding Boulevard) from south of Wells Road to the Ortega River, Clay and Duval Counties, Florida | Financial Management No: 446808-1





# Why is the Project Needed?

SR 21 (Blanding Boulevard) from south of Wells Road to the Ortega River, Clay and Duval Counties, Florida | Financial Management No: 446808-1

- Experiencing long backups
- Experiencing higher number of crashes than similar roads
- Relieve congestion and enhance safety



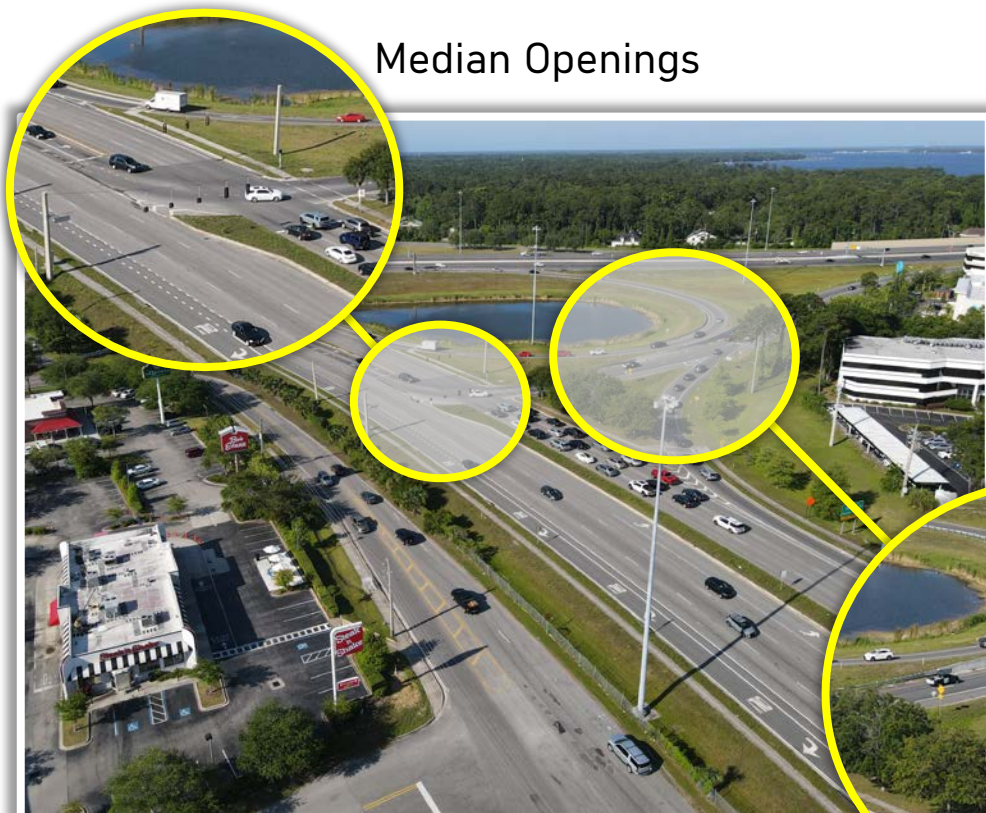


# What is Access Management?

SR 21 (Blanding Boulevard) from south of Wells Road to the Ortega River, Clay and Duval Counties, Florida | Financial Management No: 446808-1

Access management is the careful planning of the location, type and design of access to properties, businesses and homes.

Median Openings



Interchanges



Driveway Openings



Traffic Signals



# Access Management Contact Information

SR 21 (Blanding Boulevard) from south of Wells Road to the Ortega River, Clay and Duval Counties, Florida | Financial Management No: 446808-1

## Access Management Review Committee

**Attention: Carlos Nieto, PE**

Florida Department of Transportation

2198 Edison Avenue, MS 2815

Jacksonville, Florida 32204

Phone: (904) 360-5455 or (800) 207-8236

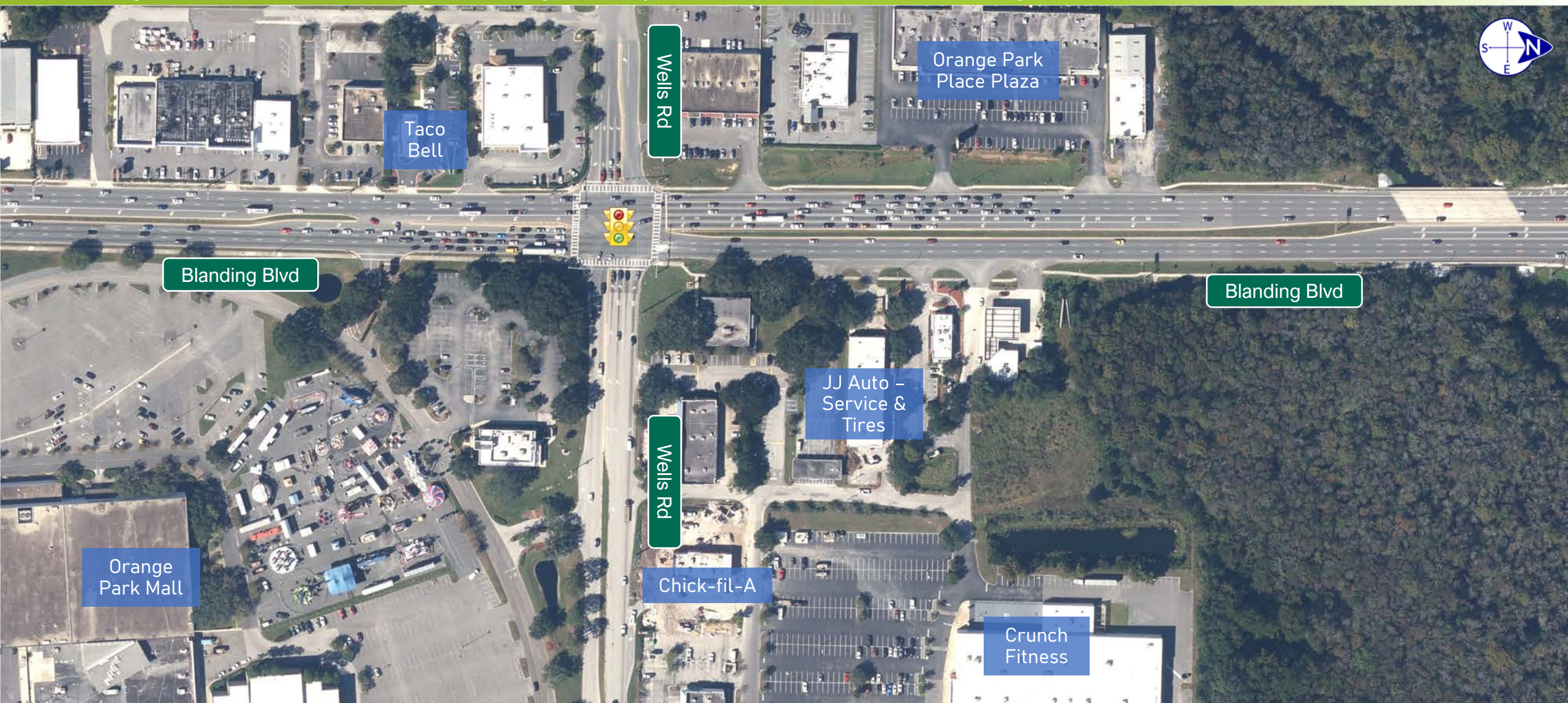
Email: [Carlos.Nieto@dot.state.fl.us](mailto:Carlos.Nieto@dot.state.fl.us)





# Existing Condition

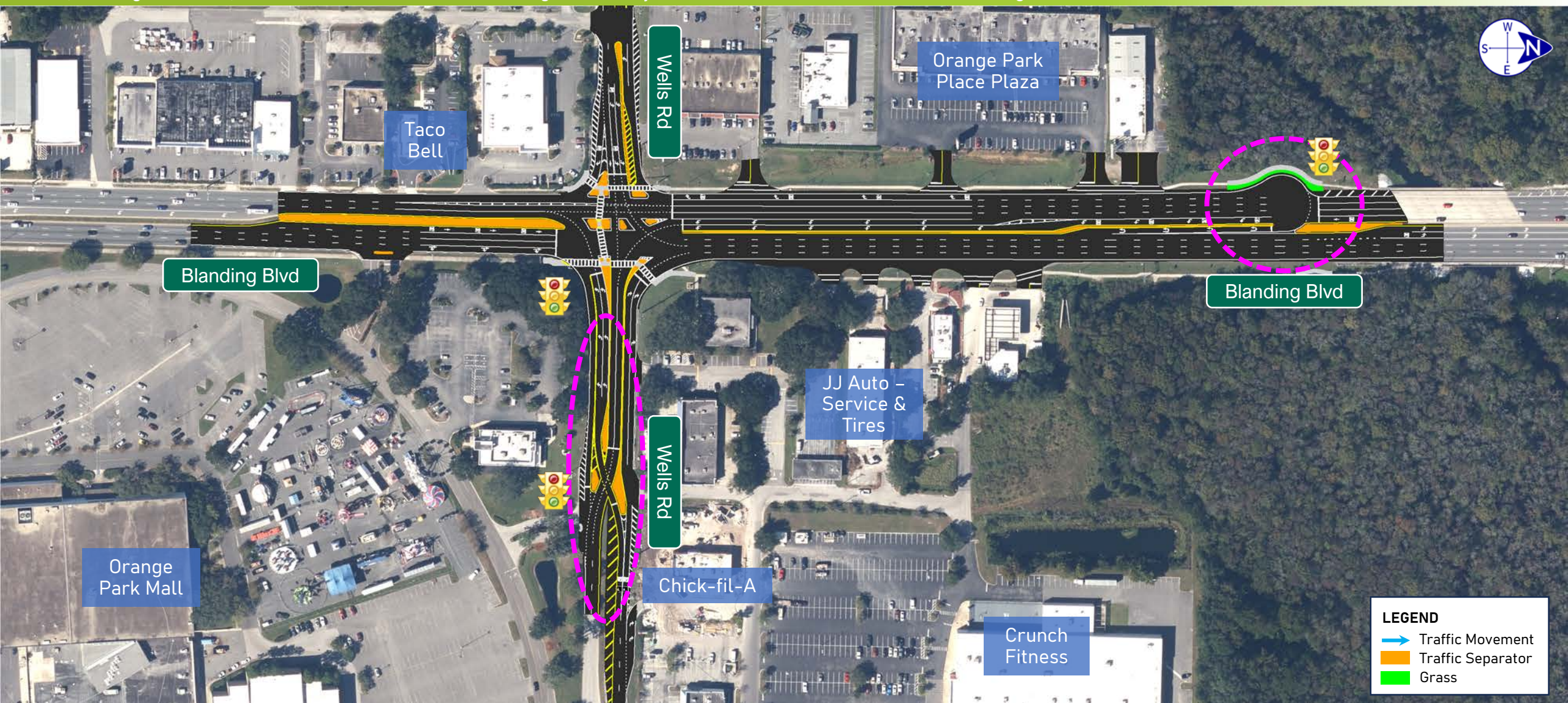
SR 21 (Blanding Boulevard) from south of Wells Road to the Ortega River, Clay and Duval Counties, Florida | Financial Management No: 446808-1





# Proposed Improvements

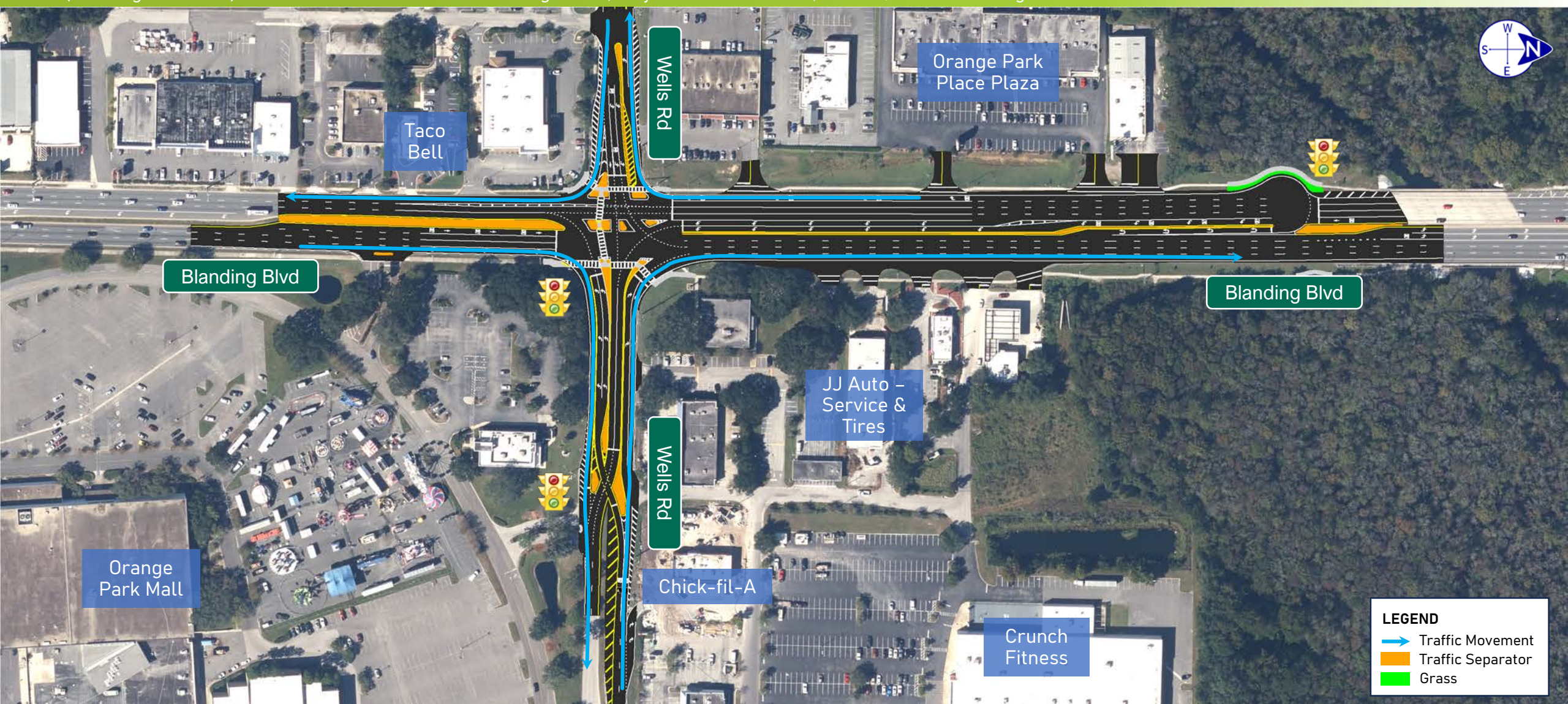
SR 21 (Blanding Boulevard) from south of Wells Road to the Ortega River, Clay and Duval Counties, Florida | Financial Management No: 446808-1





# Navigating the Intersection (Right Turning Traffic)

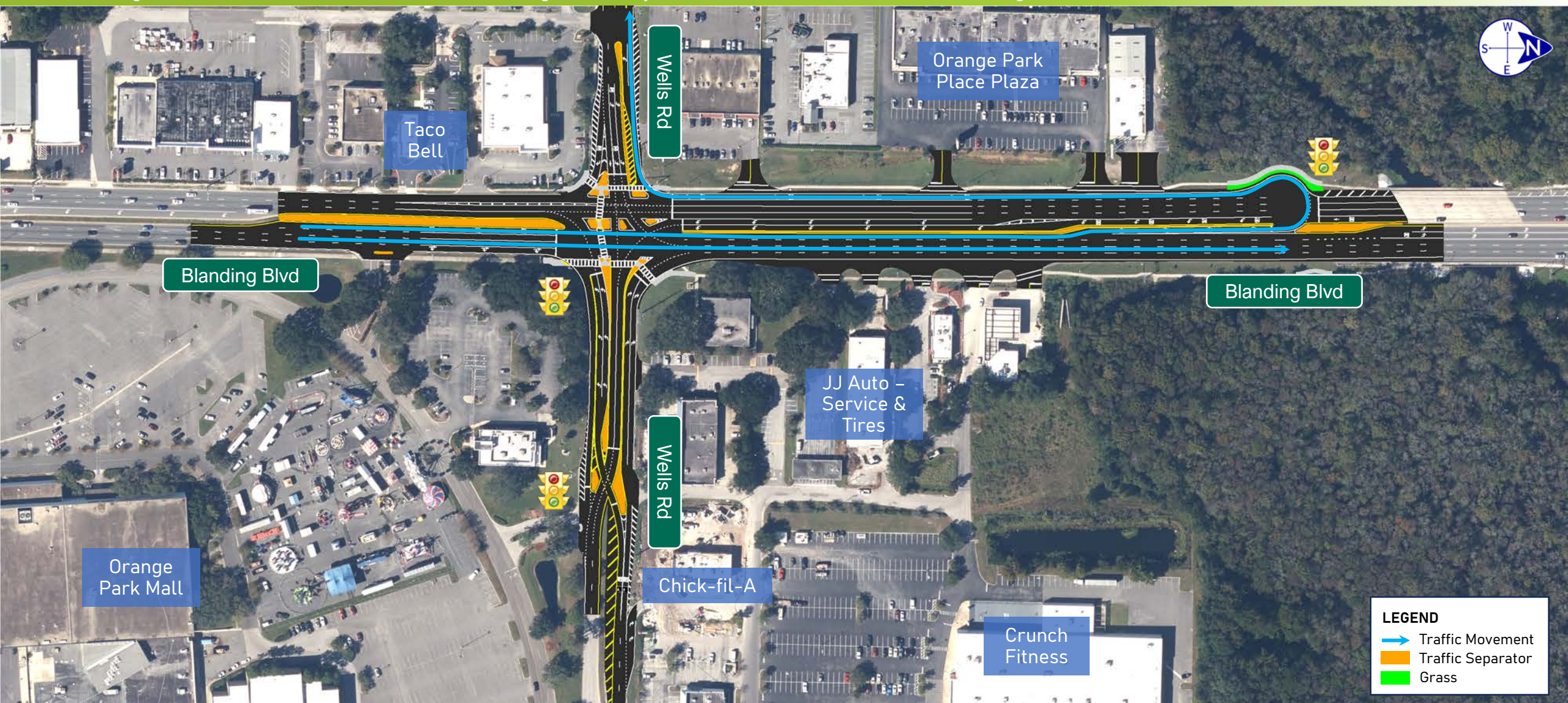
SR 21 (Blanding Boulevard) from south of Wells Road to the Ortega River, Clay and Duval Counties, Florida | Financial Management No: 446808-1





# Navigating the Intersection (Northbound Traffic)

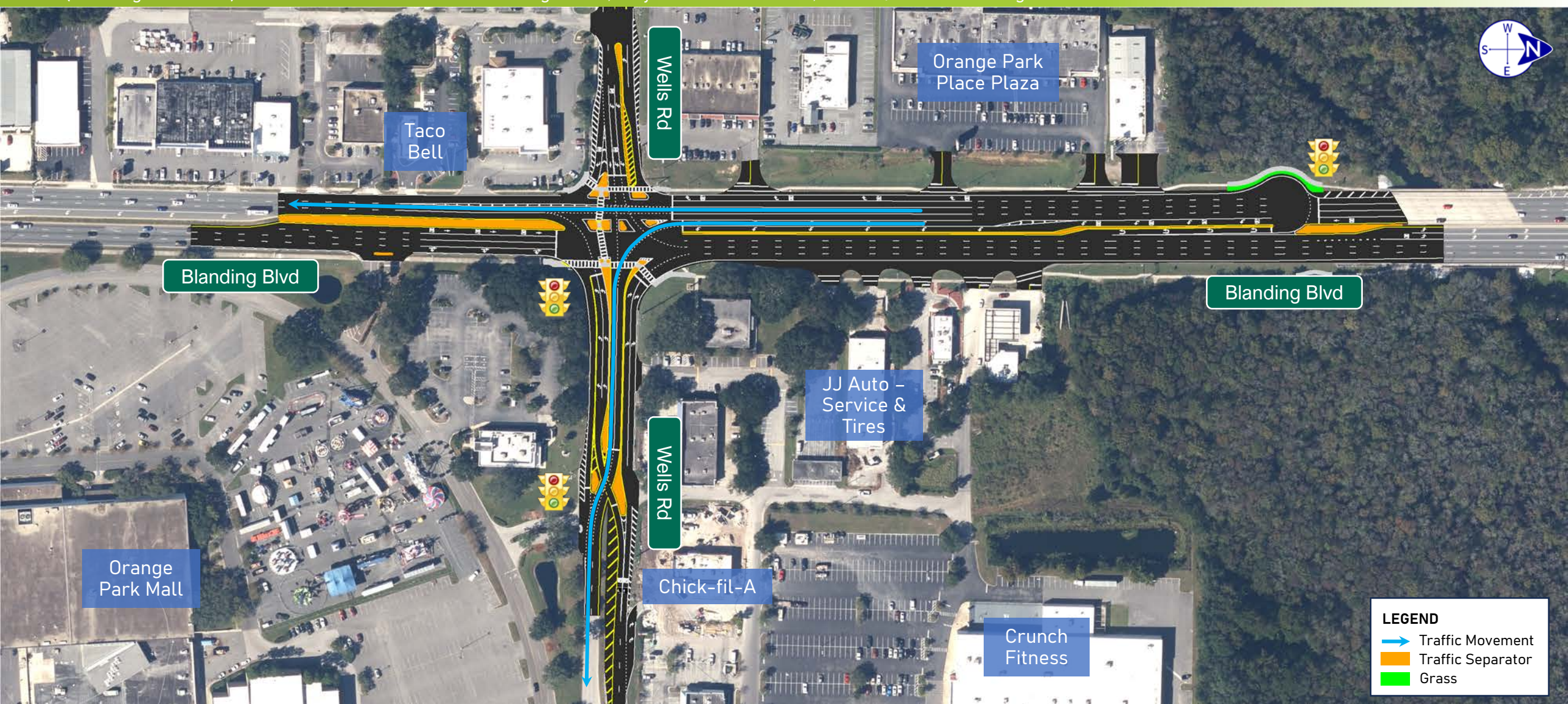
SR 21 (Blanding Boulevard) from south of Wells Road to the Ortega River, Clay and Duval Counties, Florida | Financial Management No: 446808-1





# Navigating the Intersection (Southbound Traffic)

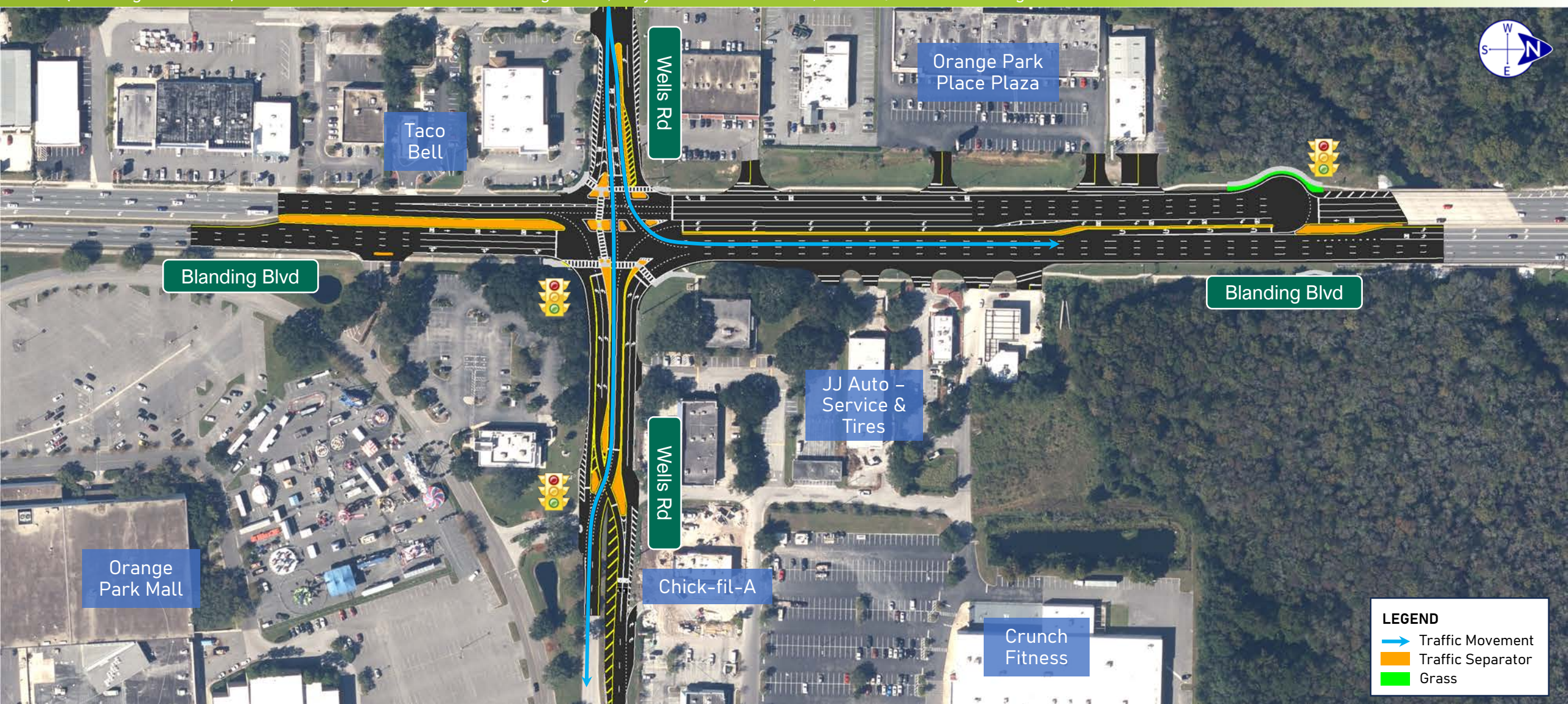
SR 21 (Blanding Boulevard) from south of Wells Road to the Ortega River, Clay and Duval Counties, Florida | Financial Management No: 446808-1





# Navigating the Intersection (Eastbound Traffic)

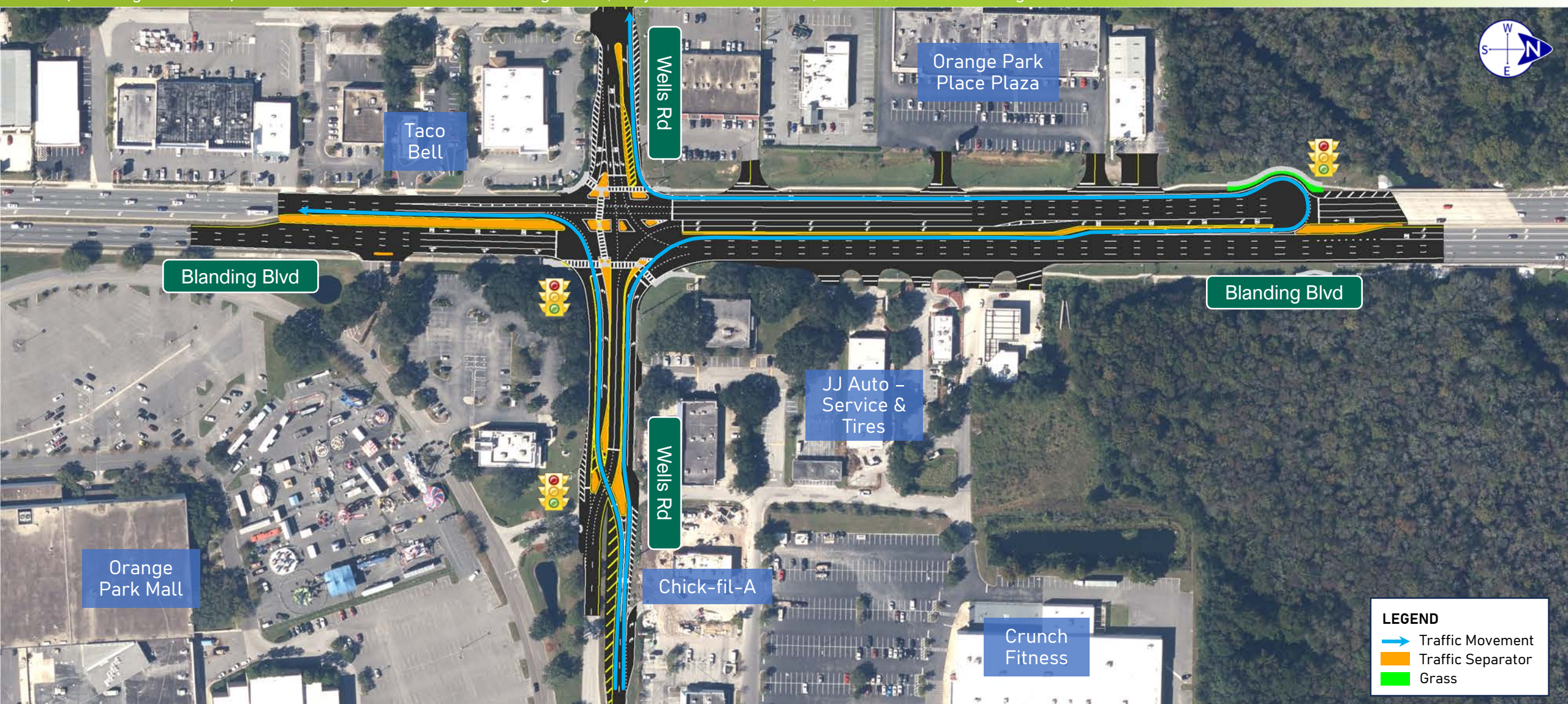
SR 21 (Blanding Boulevard) from south of Wells Road to the Ortega River, Clay and Duval Counties, Florida | Financial Management No: 446808-1





# Navigating the Intersection (Westbound Traffic)

SR 21 (Blanding Boulevard) from south of Wells Road to the Ortega River, Clay and Duval Counties, Florida | Financial Management No: 446808-1



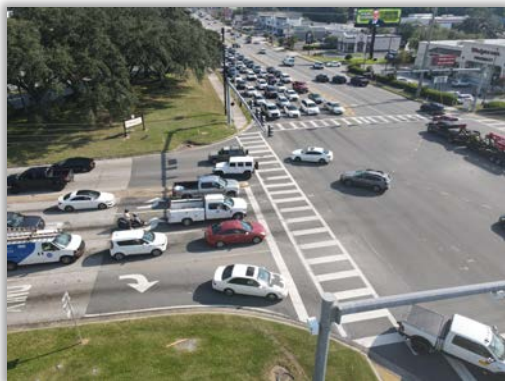
## LEGEND

- Traffic Movement
- Traffic Separator
- Grass



# Benefits of the Proposed Improvement

SR 21 (Blanding Boulevard) from south of Wells Road to the Ortega River, Clay and Duval Counties, Florida | Financial Management No: 446808-1



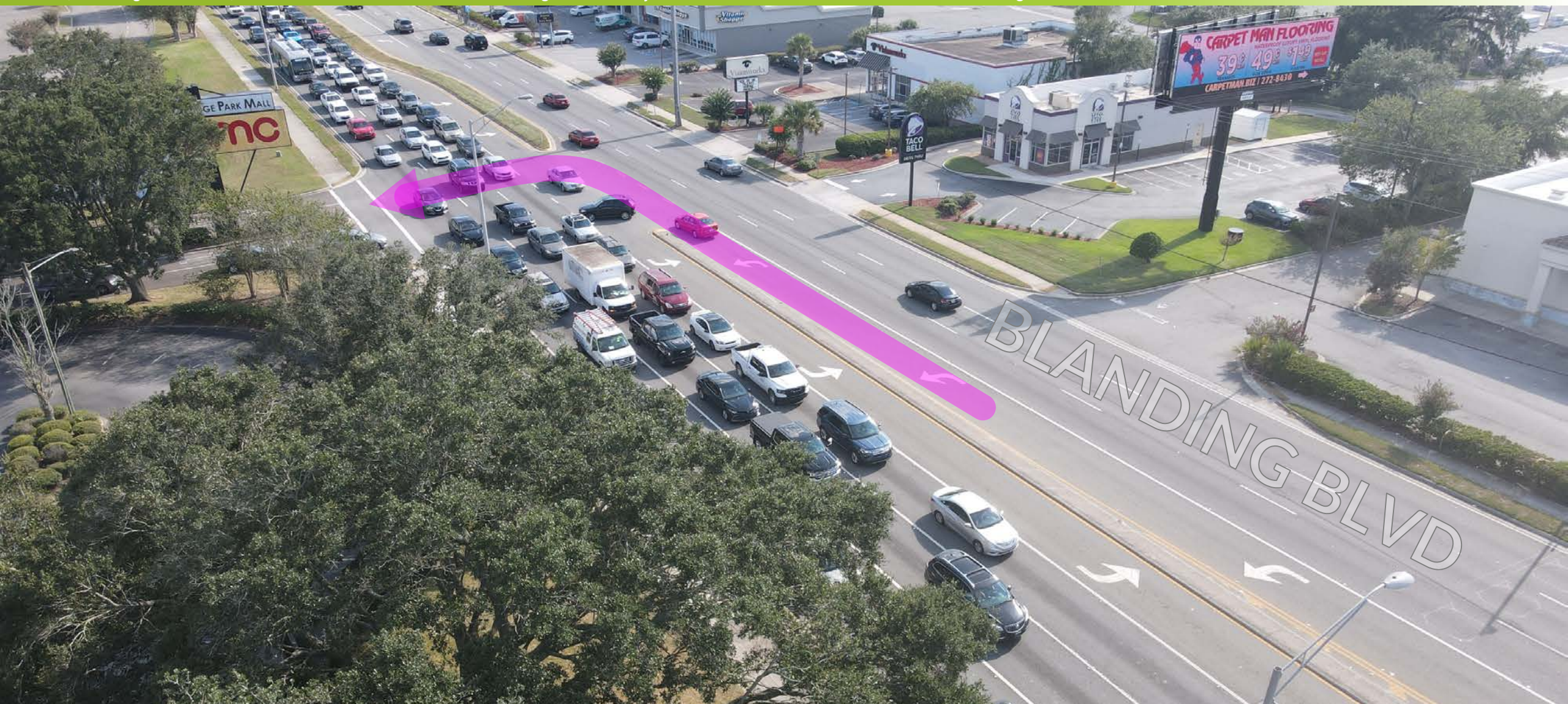
## Reduction in Average Wait Times at Blanding Boulevard and Wells Road

Year	Morning Rush Hour	Afternoon Rush Hour
2025	10.8 seconds	43.1 seconds
2045	12.4 seconds	32.2 seconds



# Access Management – Median Closure

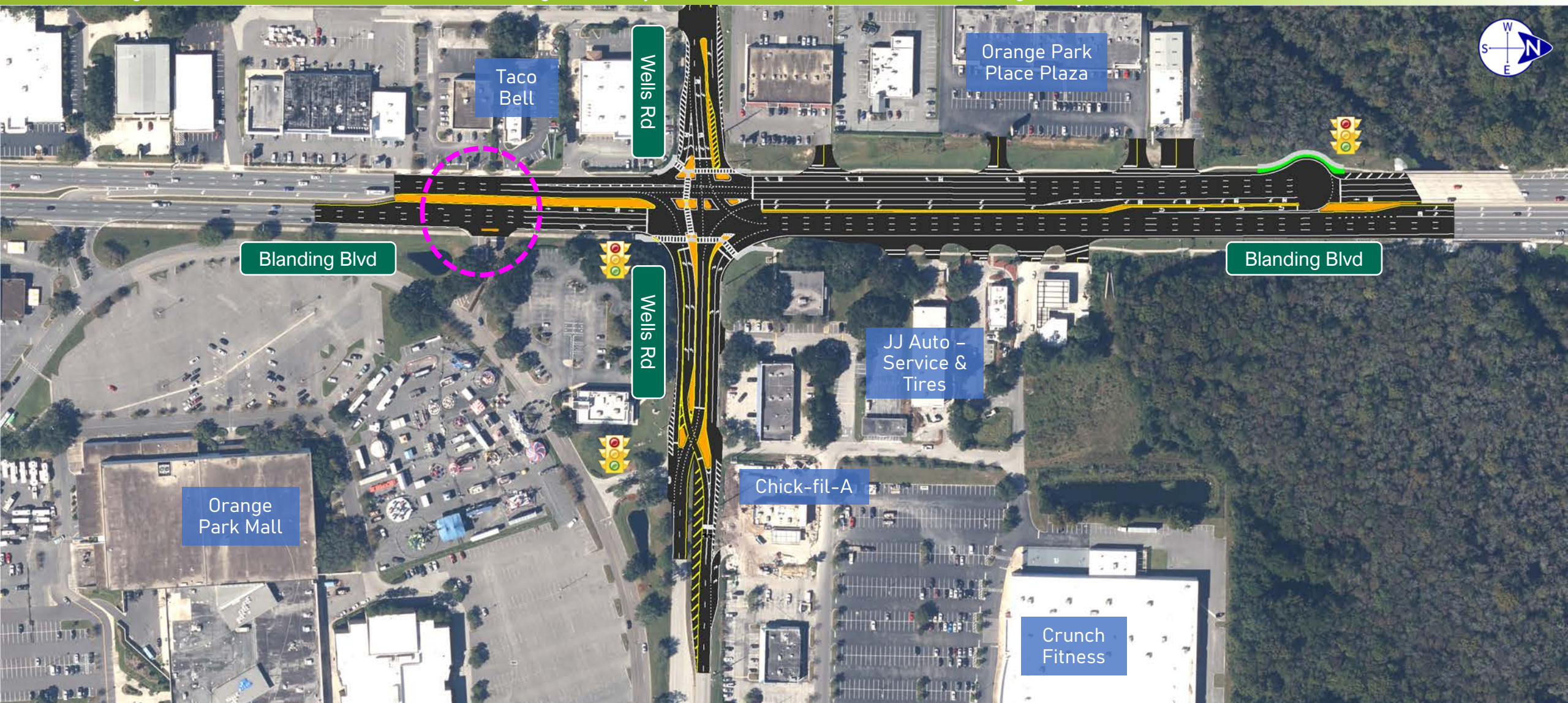
SR 21 (Blanding Boulevard) from south of Wells Road to the Ortega River, Clay and Duval Counties, Florida | Financial Management No: 446808-1





# Access Management – Median Closure

SR 21 (Blanding Boulevard) from south of Wells Road to the Ortega River, Clay and Duval Counties, Florida | Financial Management No: 446808-1





# Access Management – Median Closure

SR 21 (Blanding Boulevard) from south of Wells Road to the Ortega River, Clay and Duval Counties, Florida | Financial Management No: 446808-1





# Access Management – Median Closure

SR 21 (Blanding Boulevard) from south of Wells Road to the Ortega River, Clay and Duval Counties, Florida | Financial Management No: 446808-1

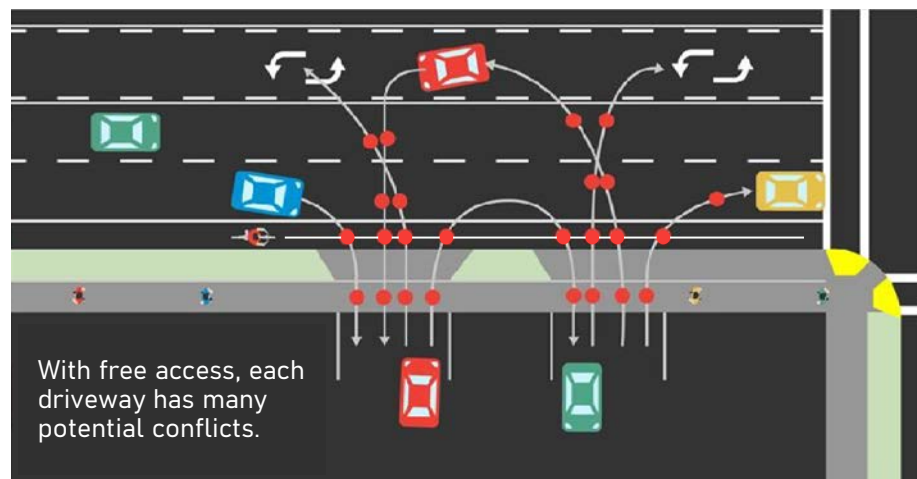




# How does Access Management Improve Safety?

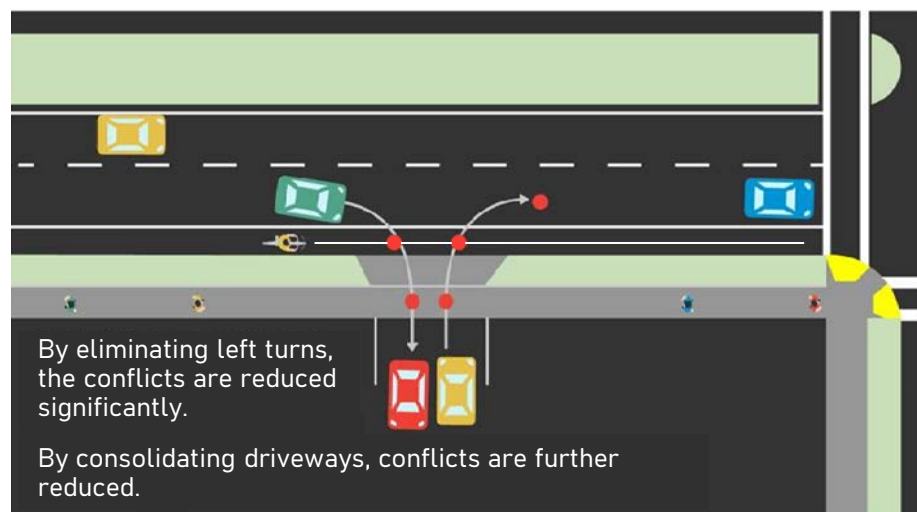
SR 21 (Blanding Boulevard) from south of Wells Road to the Ortega River, Clay and Duval Counties, Florida | Financial Management No: 446808-1

## MORE CONFLICTS



- Reduces number of conflict points for all users and therefore improves safety

## LESS CONFLICTS





# Environmental Impacts

SR 21 (Blanding Boulevard) from south of Wells Road to the Ortega River, Clay and Duval Counties, Florida | Financial Management No: 446808-1

- No significant impacts to:
  - Archaeological & Historical Sites
  - Contamination Sites
  - Wetlands
  - Water Quality
  - Floodplains
  - Threatened or Endangered Species





# Right-of-Way Acquisition

SR 21 (Blanding Boulevard) from south of Wells Road to the Ortega River, Clay and Duval Counties, Florida | Financial Management No: 446808-1

No right-of-way acquisition is anticipated  
as part of this project



## ACQUISITION PROCESS



The rights explained in this pamphlet are derived from Chapter 73, Florida Statutes. The relevant portions of Chapter 73 concerning the real estate acquisition process of real property are provided for your information at [www.FDOT.gov](http://www.FDOT.gov).

Effective: October 13, 2017

The Florida Department of Transportation's (FDOT) mission is to provide a safe transportation system that ensures the mobility of people and goods, enhances economic prosperity and preserves the quality of our environment and communities.

To accomplish our mission, sometimes it is necessary for us to acquire private property. Because you are the owner of property that will be needed for a transportation facility, we have prepared this pamphlet to briefly explain our acquisition process as well as your rights and options.

# Project Schedule and Cost

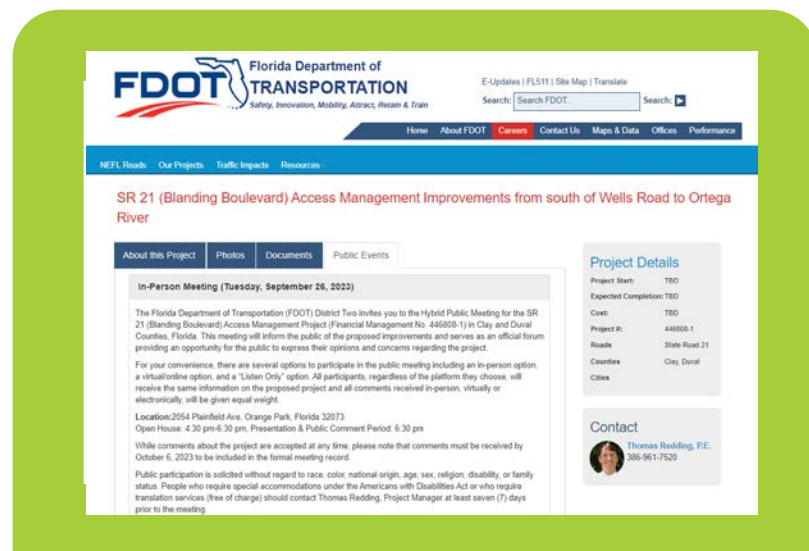
SR 21 (Blanding Boulevard) from south of Wells Road to the Ortega River, Clay and Duval Counties, Florida | Financial Management No: 446808-1

Project Phase	Year*	Cost*
Design	On-Going	\$1.35 Million
Construction	2025	\$9.01 Million

*\*Schedule and cost are preliminary and subject to change*

# Project Website

SR 21 (Blanding Boulevard) from south of Wells Road to the Ortega River, Clay and Duval Counties, Florida | Financial Management No: 446808-1



For more information  
regarding this project,  
please visit the project  
website at

[www.nflroads.com/blanding](http://www.nflroads.com/blanding)



# We Welcome Your Comments

SR 21 (Blanding Boulevard) from south of Wells Road to the Ortega River, Clay and Duval Counties, Florida | Financial Management No: 446808-1





# Contact Information

SR 21 (Blanding Boulevard) from south of Wells Road to the Ortega River, Clay and Duval Counties, Florida | Financial Management No: 446808-1



**Project Manager**  
**Thomas Redding, PE**



Florida Department of  
Transportation, District 2  
1109 S. Marion Avenue, MS-2007  
Lake City, Florida 32025



(386) 961-7520



[Thomas.Redding@dot.state.fl.us](mailto:Thomas.Redding@dot.state.fl.us)



[www.nflroads.com/blanding](http://www.nflroads.com/blanding)



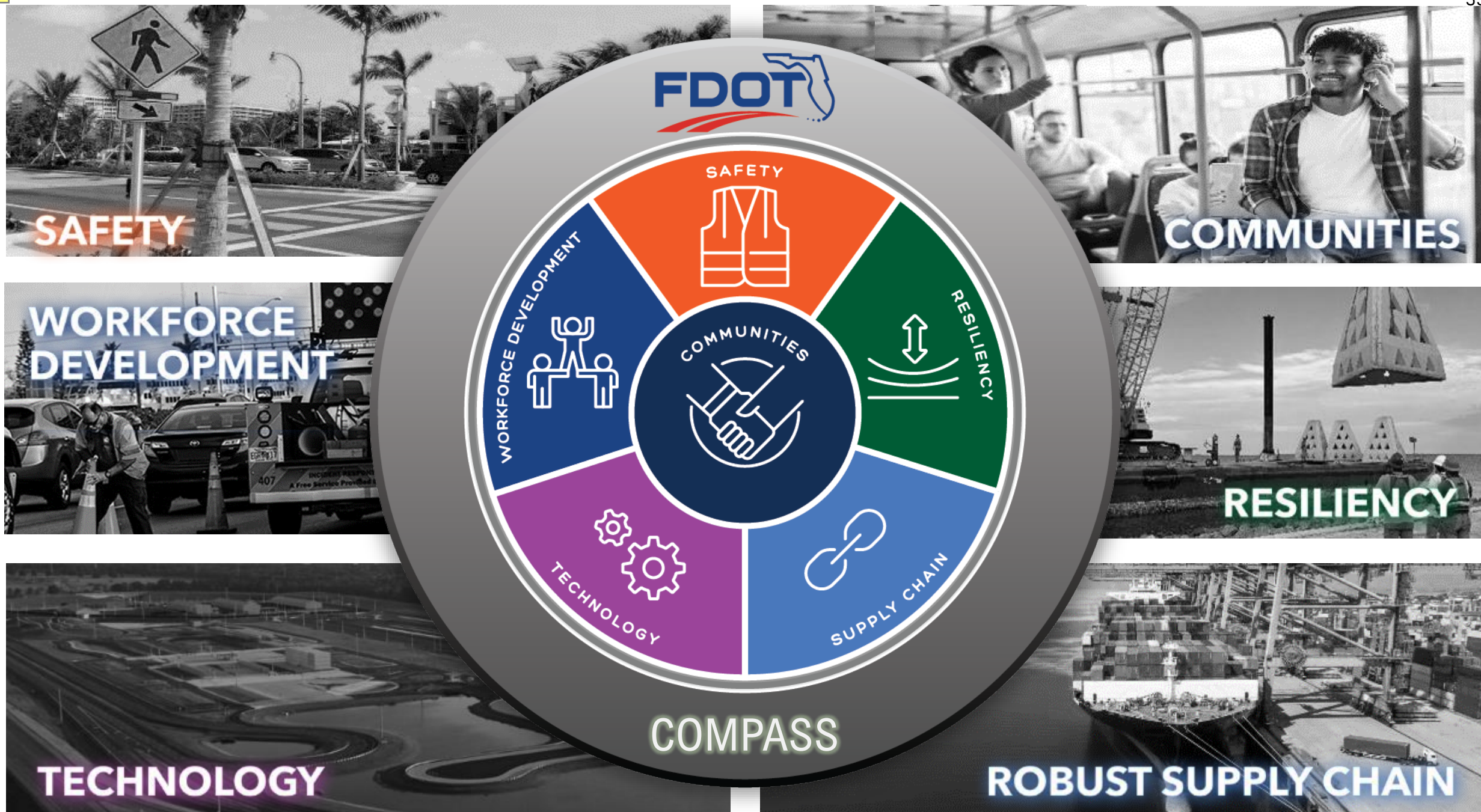
# Postmarked Comments

SR 21 (Blanding Boulevard) from south of Wells Road to the Ortega River, Clay and Duval Counties, Florida | Financial Management No: 446808-1

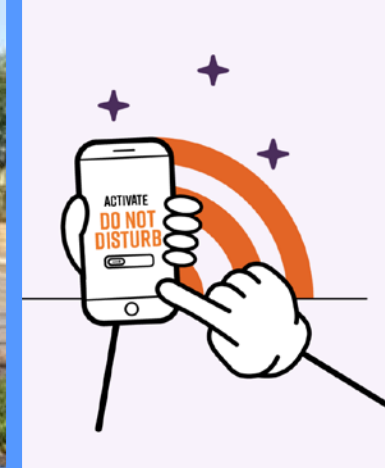


Please submit  
comments by  
October 6, 2023











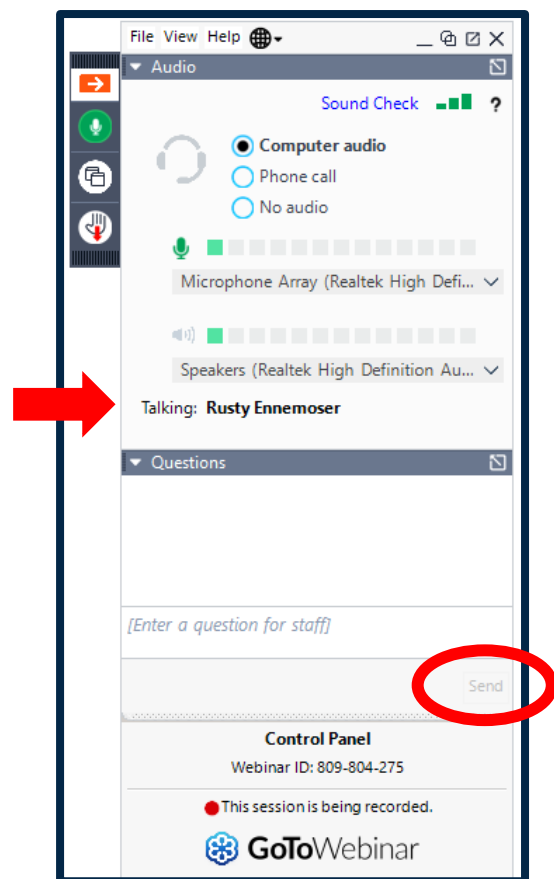


THANK YOU

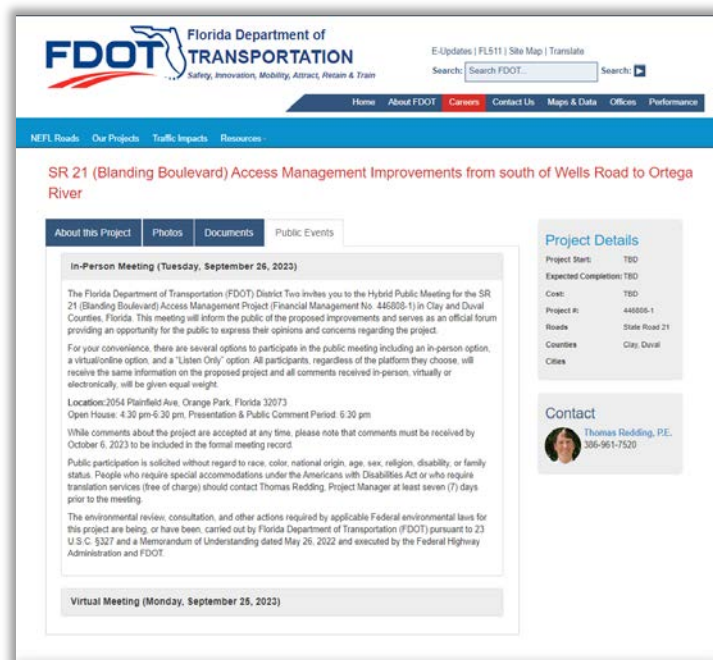


# Submitting Questions or Comments

SR 21 (Blanding Boulevard) from south of Wells Road to the Ortega River, Clay and Duval Counties, Florida | Financial Management No: 446808-1



## Control Panel



## Project Website

[www.nflroads.com/blanding](http://www.nflroads.com/blanding)



## Email

[Thomas.Redding@dot.state.fl.us](mailto:Thomas.Redding@dot.state.fl.us)



# Submitting Questions or Comments

SR 21 (Blanding Boulevard) from south of Wells Road to the Ortega River, Clay and Duval Counties, Florida | Financial Management No: 446808-1

- Virtual / Online Participants
- Oral Comments:
  - Click Raise Hand button on the Control Panel
  - Unmute your microphone when your name is called

*See GoToWebinar  
Control Panel*







# PUBLIC COMMENT PERIOD